



monica

Monitor and Control Solution

MONICA is a state-of-the-art ground station monitor and control solution, built primarily for the satellite industry.

Over the last 15 years, Amphinity has acquired in-depth knowledge and experience in **delivering M&C solutions** to some of the most demanding customers in the world.

Our solution, MONICA is **robust, secure and reliable**, demonstrates high performances and is **able to scale** to any size of the customer service.



monica.amphinity.com



Main features

- White-label, fully customizable M&C system
- Can be used as a stand-alone application or a framework for building more complex solutions
- Java-based - no need for special hardware or additional licenses
- User-friendly, plug-and-play driver configuration
- Supports a growing number of communication protocols (SNMP, SCPI, REST, FTP, ASCII-based, etc.)
- High-availability mode
- Scalability - supports 10 to 100.000+ instruments
- More than a million parameter reading cycles per second
- Supports distributed and hierarchical deployment schemas
- Custom, flexible action scripting via Python
- Powerful alarming based on user-friendly rules definition and device-related constraints
- Trending analysis and charts
- Rich and customizable reports
- Task automation (scripts, report generation), via scheduler or alarm-driven events
- Easy to install and maintain
- Operator-friendly, modern web user interface
- Fully integrable with other systems via REST API or special NBI
- Tight security and user management
- Extensive logging mechanisms

Technical specification

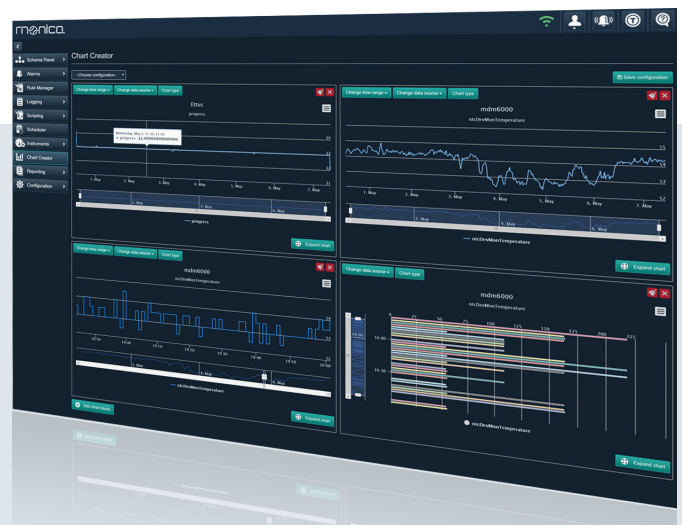
- Running on Wildfly application server and Red Hat-based OS
 - No additional license fees
- Supports failover mode
- Adaptable to various DBMS
 - PostgreSQL as default
 - Supports remote datacenters

Driver pollers

- Easily configurable existing pollers
- Can support any communication protocol
 - Including proprietary protocols
- Configurable polling times
- Fixed hard limits to prevent equipment damage

Integration

- Integrable with other OSS / BSS systems via NBI (supports REST and SNMP)
- Data centres with a possibility of data aggregation



MONICA is a critical building block of any ground station.



www.amphinicy.com